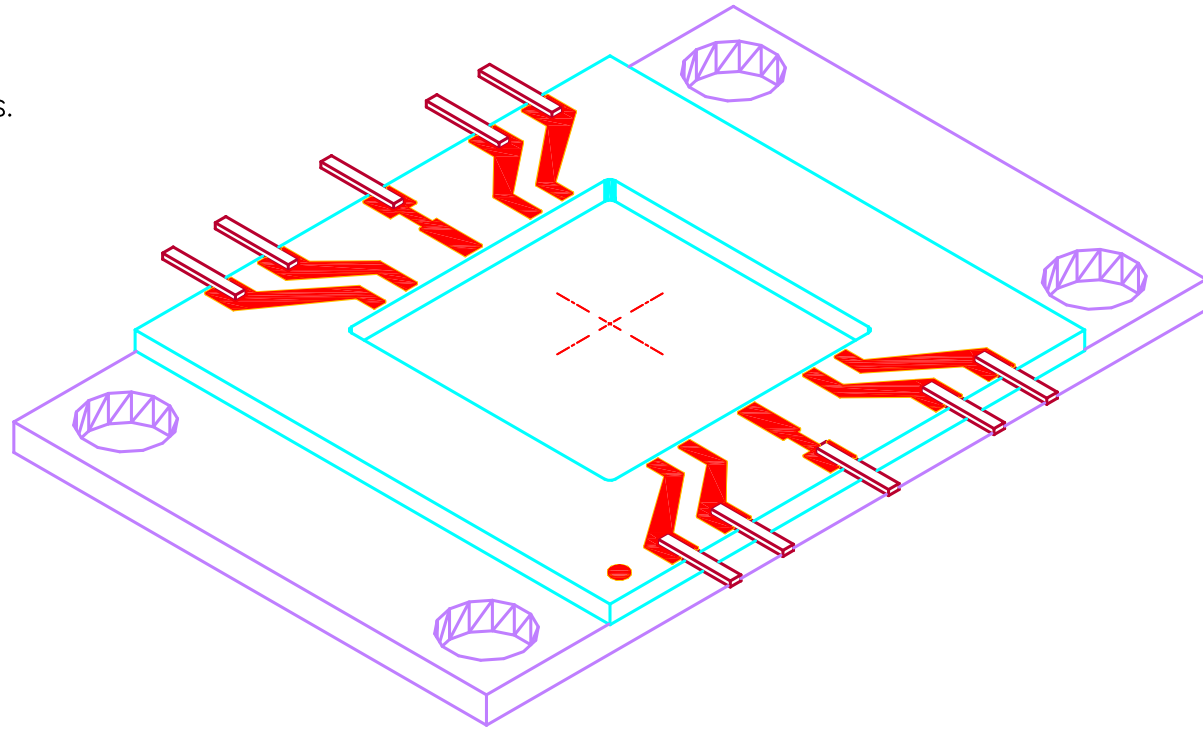



PROPRIETARY
 THE INFORMATION CONTAINED IN OR DISCLOSED BY THIS DOCUMENT IS CONSIDERED PROPRIETARY BY STRATEDGE CORPORATION. THE ITEMS AND INFORMATION CONTAINED OR DISCLOSED HEREIN SHALL NOT BE USED, COPIED OR REPRODUCED IN WHOLE OR IN PART, NOR SHALL THE CONTENTS BE REVEALED IN ANY MANNER TO ANY PERSON UNLESS WRITTEN PERMISSION IS FIRST OBTAINED FROM STRATEDGE CORPORATION.

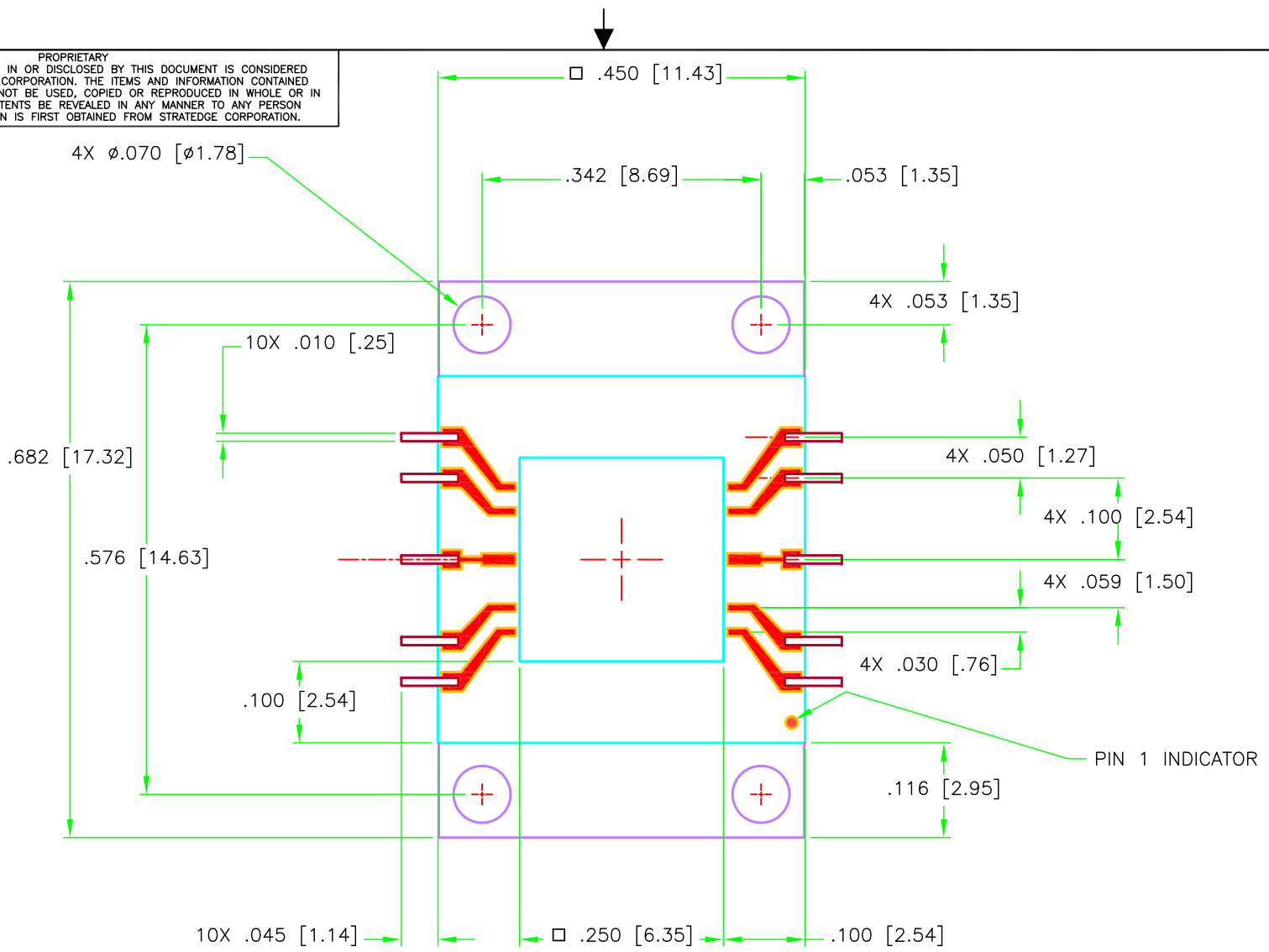
NOTES, UNLESS OTHERWISE SPECIFIED:

- 1. BASE MATERIAL CMC 1:3:1.
- 2. CERAMIC SHALL BE 96% Al₂O₃.
- 3. LEAD, BASE, AND CERAMIC GOLD PLATING THICKNESS SHALL BE 50 MICRONS MINIMUM, MEASURED ON MAJOR FLATS.
- 4. LEAD, BASE, AND CERAMIC NICKEL UNDERPLATE SHALL BE 100 TO 350 MICRONS, MEASURED ON MAJOR FLATS.
- 5. LID: REFERENCE STRATEDGE PART NUMBER RP3535-075-001(200046).



UNLESS OTHERWISE SPECIFIED ● DIMENSIONS ARE IN INCHES [MM] ● TOLERANCES: ANGLES +/- 1 DEG 4 PL DECIMALS ±.0005 [.013] 3 PL DECIMALS ±.005 [.13] 2 PL DECIMALS ±.01 [.25]	DRAFTER DONALD PEHLE	DATE 09/13/19	 6335 Ferris Square, Suite C San Diego, CA 92121		
	PROJECT ENGINEER TIM GOING	DATE 09/13/19			
	CHECKER MIKE YANG	DATE 09/13/19	10 LEAD LAMINATED PACKAGE, DC TO 23 GHz WITH CMC BASE AND TRIMED LEADS		
	MARKETING CASEY KRAWIEC	DATE 09/13/19			
QA DONALD PEHLE	DATE 09/13/19	SIZE A	CAGE CODE OHZT6	DRAWING NO LL6845-10-2 MOD1	REV -
		SCALE NONE	LL6845-10-2_1 MOD1		SHEET 1 OF 2

PROPRIETARY
 THE INFORMATION CONTAINED IN OR DISCLOSED BY THIS DOCUMENT IS CONSIDERED PROPRIETARY BY STRATEDGE CORPORATION. THE ITEMS AND INFORMATION CONTAINED OR DISCLOSED HEREIN SHALL NOT BE USED, COPIED OR REPRODUCED IN WHOLE OR IN PART, NOR SHALL THE CONTENTS BE REVEALED IN ANY MANNER TO ANY PERSON UNLESS WRITTEN PERMISSION IS FIRST OBTAINED FROM STRATEDGE CORPORATION.



	SIZE	CAGE CODE	DRAWING NO	REV
	A	OHZT6	LL6845-10-2 MOD 1	-
SCALE	NONE	LL6845-10-2_2 MOD1	SHEET 2 OF 2	