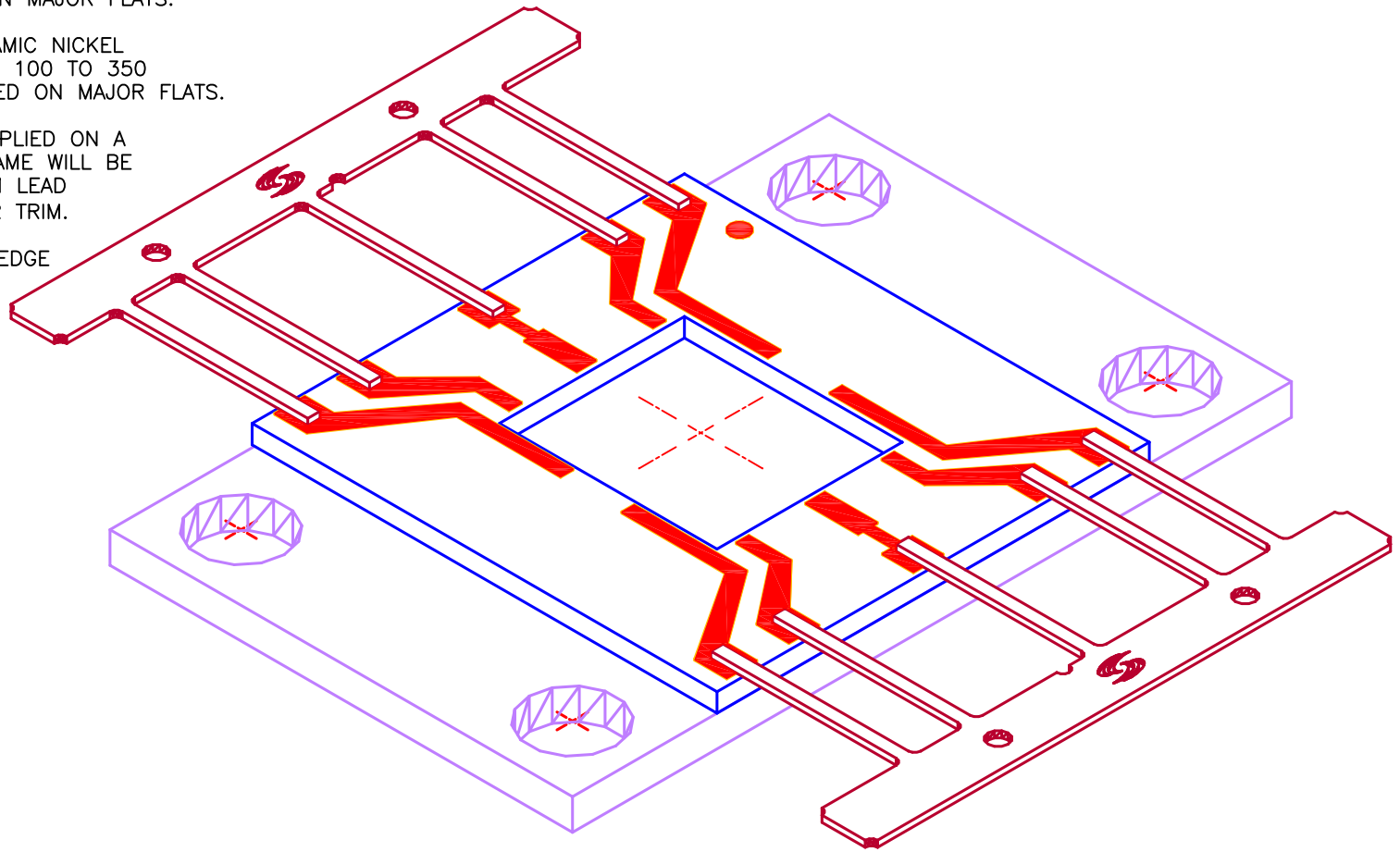


PROPRIETARY
 THE INFORMATION CONTAINED IN OR DISCLOSED BY THIS DOCUMENT IS CONSIDERED PROPRIETARY BY STRATEDGE CORPORATION. THE ITEMS AND INFORMATION CONTAINED OR DISCLOSED HEREIN SHALL NOT BE USED, COPIED OR REPRODUCED IN WHOLE OR IN PART, NOR SHALL THE CONTENTS BE REVEALED IN ANY MANNER TO ANY PERSON UNLESS WRITTEN PERMISSION IS FIRST OBTAINED FROM STRATEDGE CORPORATION.

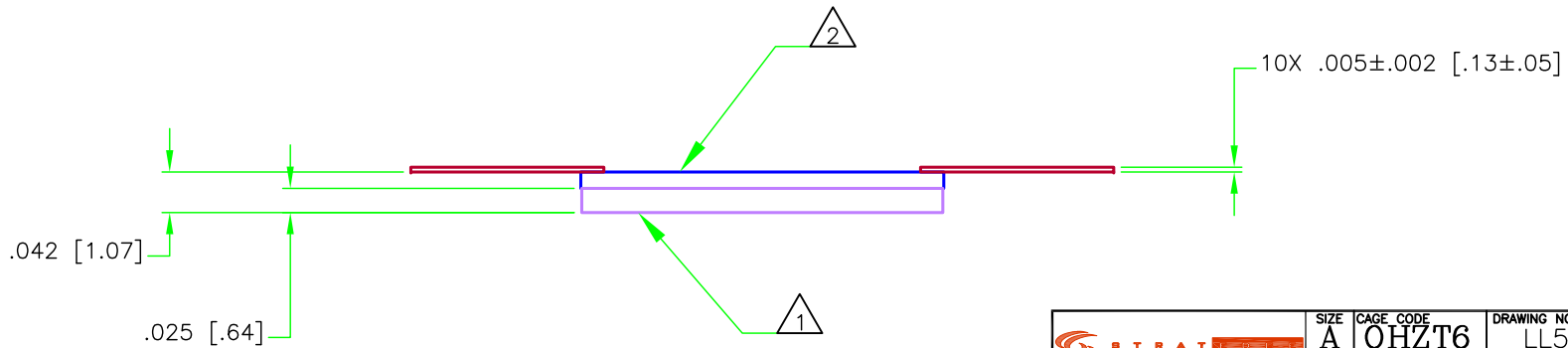
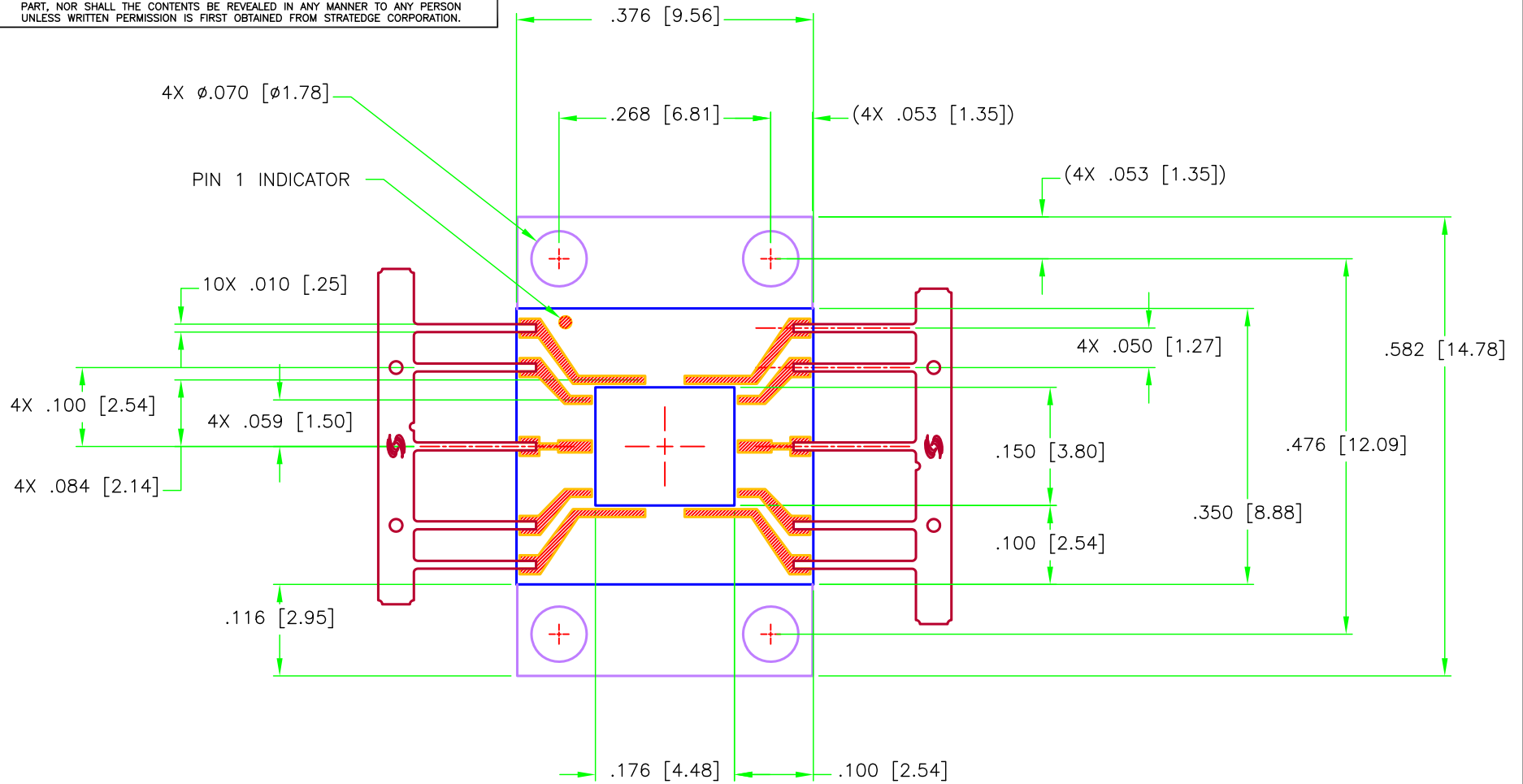
NOTES, UNLESS OTHERWISE SPECIFIED:

- 1. BASE MATERIAL CMC 1:3:1.
- 2. CERAMIC SHALL BE 96% Al₂O₃.
- 3. LEAD, BASE, AND CERAMIC GOLD PLATING THICKNESS SHALL BE 50 MICRONS MINIMUM, MEASURED ON MAJOR FLATS.
- 4. LEAD, BASE, AND CERAMIC NICKEL UNDERPLATE SHALL BE 100 TO 350 MICRONS, MEASURED ON MAJOR FLATS.
- 5. PACKAGE WILL BE SUPPLIED ON A LEAD FRAME. LEAD FRAME WILL BE SUITABLE FOR MINIMUM LEAD LENGTH OF .10" AFTER TRIM.
- 6. LID: REFERENCE STRATEDGE PART NUMBER TBD.



UNLESS OTHERWISE SPECIFIED ● DIMENSIONS ARE IN INCHES [MM] ● TOLERANCES: ANGLES +/- 1 DEG 4 PL DECIMALS ±.0005 [.013] 3 PL DECIMALS ±.005 [.13] 2 PL DECIMALS ±.01 [.25]	DRAFTER DONALD PEHLE	DATE 06-20-16	STRATEDGE 6335 Ferris Square, Suite C San Diego, CA 92121		
	PROJECT ENGINEER TIM GOING	DATE 06-20-16			
	CHECKER JERRY CARTER	DATE 06-20-16	10 LEAD LAMINATED PACKAGE DC TO 23 GHz		
	MARKETING CAROL STANLEY	DATE 06-20-16			
QA DONALD PEHLE	DATE 06-20-16	SIZE A	CAGE CODE OHZT6	DRAWING NO LL5838-10-1	REV -
		SCALE NONE	LL5838-10-1_1	SHEET 1 OF 2	

PROPRIETARY
 THE INFORMATION CONTAINED IN OR DISCLOSED BY THIS DOCUMENT IS CONSIDERED PROPRIETARY BY STRATEDGE CORPORATION. THE ITEMS AND INFORMATION CONTAINED OR DISCLOSED HEREIN SHALL NOT BE USED, COPIED OR REPRODUCED IN WHOLE OR IN PART, NOR SHALL THE CONTENTS BE REVEALED IN ANY MANNER TO ANY PERSON UNLESS WRITTEN PERMISSION IS FIRST OBTAINED FROM STRATEDGE CORPORATION.



	SIZE	CAGE CODE	DRAWING NO	REV
	A	OHZT6	LL5838-10-1	-
SCALE	NONE	LL5838-10-1_2	SHEET	2 OF 2