

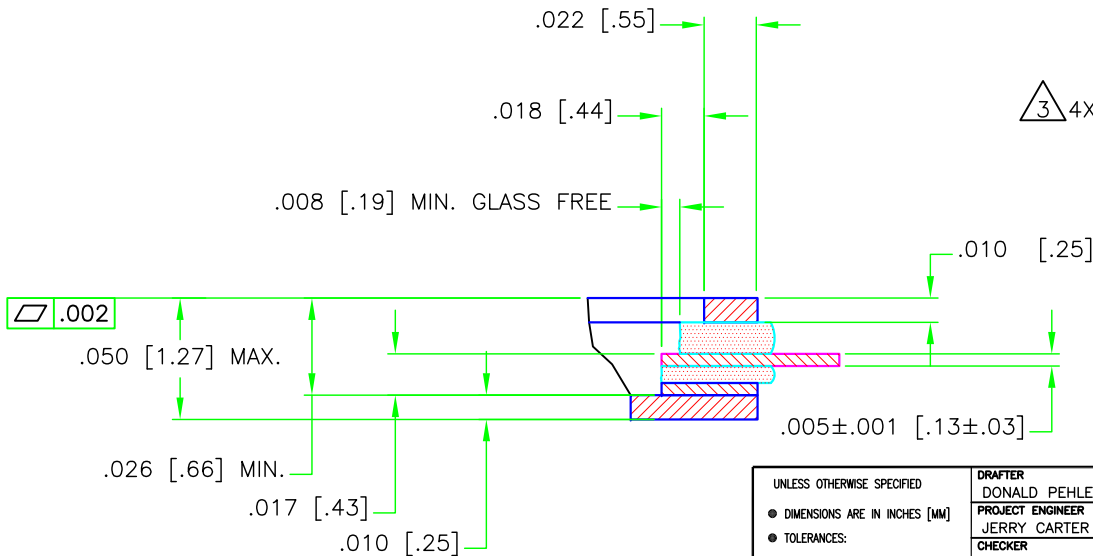
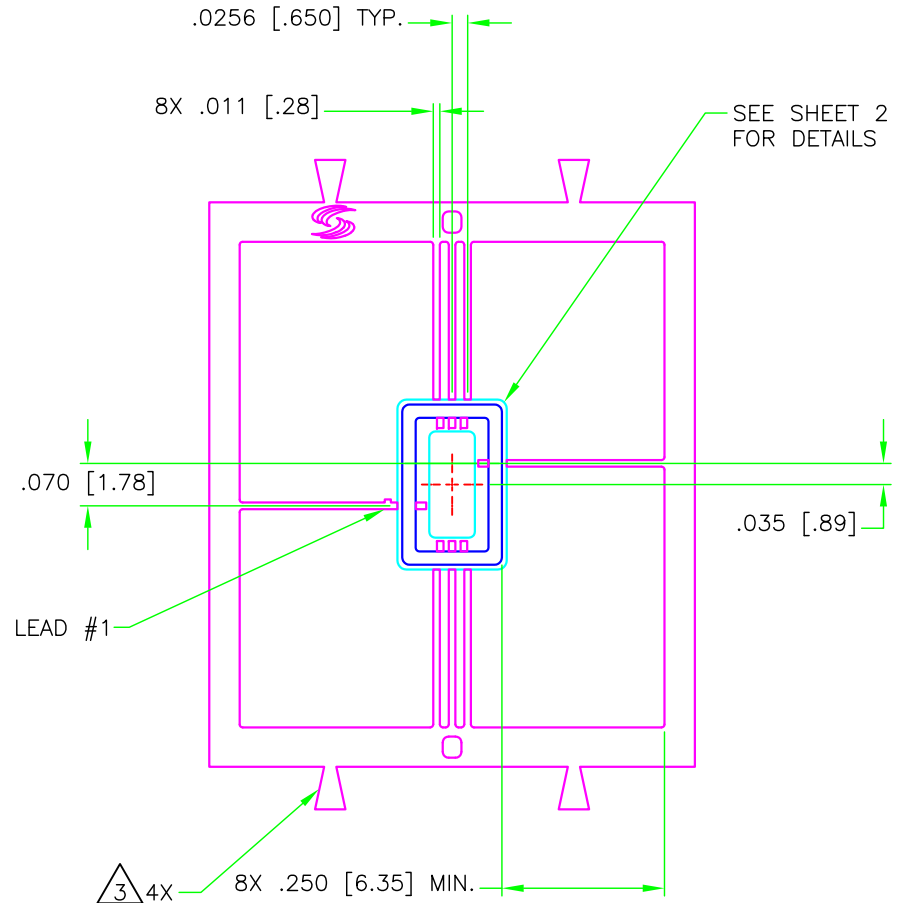
PROPRIETARY  
 THE INFORMATION CONTAINED IN OR DISCLOSED BY THIS DOCUMENT IS CONSIDERED PROPRIETARY BY STRATEDGE CORPORATION. THE ITEMS AND INFORMATION CONTAINED OR DISCLOSED HEREIN SHALL NOT BE USED, COPIED OR REPRODUCED IN WHOLE OR IN PART, NOR SHALL THE CONTENTS BE REVEALED IN ANY MANNER TO ANY PERSON UNLESS WRITTEN PERMISSION IS FIRST OBTAINED FROM STRATEDGE CORPORATION.


NOTES, UNLESS OTHERWISE SPECIFIED:

- MATERIAL:  
 SEAL RINGS: F-15 ALLOY  
 BASE: CMC 1:3:1  
 LEADS: F-15 ALLOY  
 GLASS: 7052 OR EQUIVALENT WITH AL/LOAD

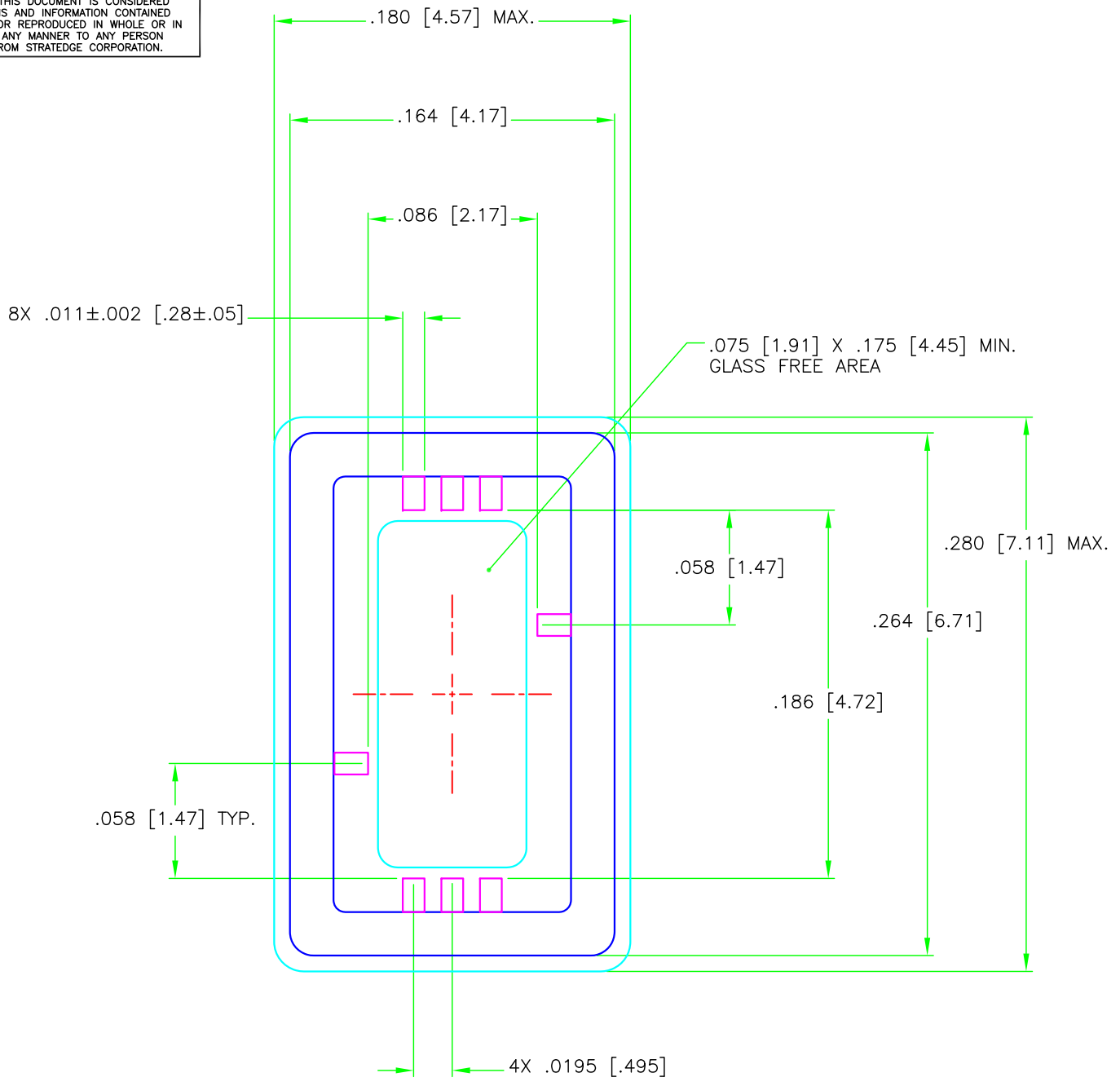
- PLATING:  
 GOLD SHALL BE 50 MICROINCHES MINIMUM.  
 NICKEL UNDERPLATE SHALL BE 50 TO 200 MICROINCHES. MEASURED ON MAJOR FLATS.

$\triangle 3$  REMNANT TABS MAY BE PRESENT ON TIE BAR EXTERIOR.



UNLESS OTHERWISE SPECIFIED ● DIMENSIONS ARE IN INCHES [MM] ● TOLERANCES:  ANGLES +/- 1 DEG 4 PL DECIMALS ±.0005 [.013] 3 PL DECIMALS ±.005 [.13] 2 PL DECIMALS ±.01 [.25]	DRAFTER DONALD PEHLE	DATE 07/11/17	 6335 Ferris Square, Suite C San Diego, CA 92121
	PROJECT ENGINEER JERRY CARTER	DATE 07/11/17	
	CHECKER TIM GOING	DATE 07/14/17	8 LEAD MOLDED GLASS WITH CMC1:3:1 BASE
	MARKETING CAROL STANLEY	DATE 07/14/17	
QA DONALD PEHLE	DATE 07/14/17	SIZE A CAGE CODE OHZT6 DRAWING NO G2616CMC-1 REV A SCALE NONE G2616CMC-1A1 SHEET 1 OF 2	

PROPRIETARY  
 THE INFORMATION CONTAINED IN OR DISCLOSED BY THIS DOCUMENT IS CONSIDERED PROPRIETARY BY STRATEDGE CORPORATION. THE ITEMS AND INFORMATION CONTAINED OR DISCLOSED HEREIN SHALL NOT BE USED, COPIED OR REPRODUCED IN WHOLE OR IN PART, NOR SHALL THE CONTENTS BE REVEALED IN ANY MANNER TO ANY PERSON UNLESS WRITTEN PERMISSION IS FIRST OBTAINED FROM STRATEDGE CORPORATION.



	SIZE	CAGE CODE	DRAWING NO	REV
	A	OHZT6	G2616CMC-1	A
SCALE	NONE	G2616CMC-1A2	SHEET	2 OF 2