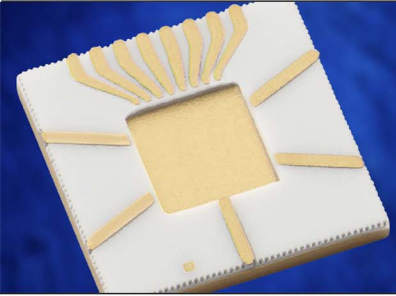




ULTRA LOW LOSS BROADBAND PACKAGES

HIGH FREQUENCY
AND
HIGH SPEED
PACKAGING

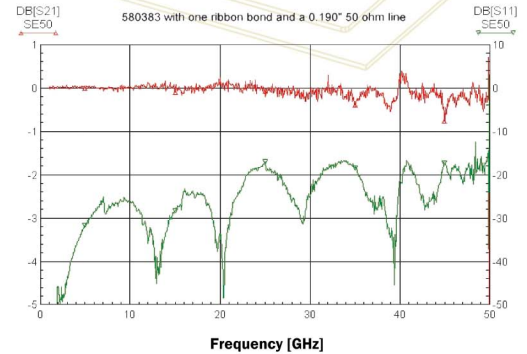


The StratEdge SE50 Series are DC to 60 GHz off-the-shelf packages with ultra low electrical loss. StratEdge's SE50 family is the original drop-in package design for these frequencies. With a thermally conductive copper composite base and its revolutionary patented microstrip-imbedded microstrip-microstrip transition design, the SE50 package provides superior electrical performance even in thermally stressful environments. SE50 packages are mounted into cutouts in the board and connected with ribbon bonds to achieve the ultra low loss connections. A plastic cup-shaped lid is used to seal the package with a b-stage epoxy preform.

Because of their broadband performance, extremely low electrical loss, and ability to handle wide temperature variations, these versatile packages are used in a variety of applications.

SE50 packages are used in point-to-point and point-to-multipoint radio applications where the packages must protect the broadband, high power amplifiers. Their ability to maintain signal integrity makes them ideal for low noise amplifiers (LNAs,) phase shifters, and switches. The SE50's popularity continues to grow with the re-emergence of OC-768 high speed digital systems. It's impossible to find a lower cost, lower loss package.

StratEdge SE50 Package Single Transition



- Ultra low loss from DC to 60 GHz
- High thermal conductivity copper composite base
- Supplied with cup-shaped lid with epoxy preform
- VSAT, PTP radios, PTMP radios
- Wire or ribbon bonded directly to board

PN	Length	Width	Cavity Length	Cavity Width	Lid PN	I/O's
580383	.390"	.330"	.200"	.140"	200121	6RF
580384	.300"	.300"	.100"	.100"	200110	2RF, 8DC
580427	.343"	.354"	.164"	.180"	200090	2RF, 6DC
580455	.238"	.232"	.098"	.099"	200117	5RF, 8DC
580458	.450"	.450"	.250"	.250"	200118	10RF
580459	.371"	.314"	.214"	.162"	200119	2RF, 2DC

Other custom configurations available upon request. Please consult factory.

U.S. Patent#s: 6,639,305; 6,271,579; 6,172,412; 5,448,826; 5,465,008, 5,692,298, 5,753,972, 5,736,783; 6,261,867; 09/054,049 & other patents pending
Foreign Patent#s: NI 091074; NI 118360; NI 186089; EP 0902976; AT 220245; AU 199724473; AU 199726655; AU 199918149; DE 69713771; EP 0902975; JP 2000510286; JP 2000510287; TW 322612; TW 4000590; TW 554451; WO 199743786; WO 199743787; WO 199934443; WO 2002063684 & other patents pending

6335 FERRIS SQUARE
SUITE C
SAN DIEGO, CA 92121

ph
866.424.4962 toll free

em
info@stratedge.com

www.
stratedge.com

