

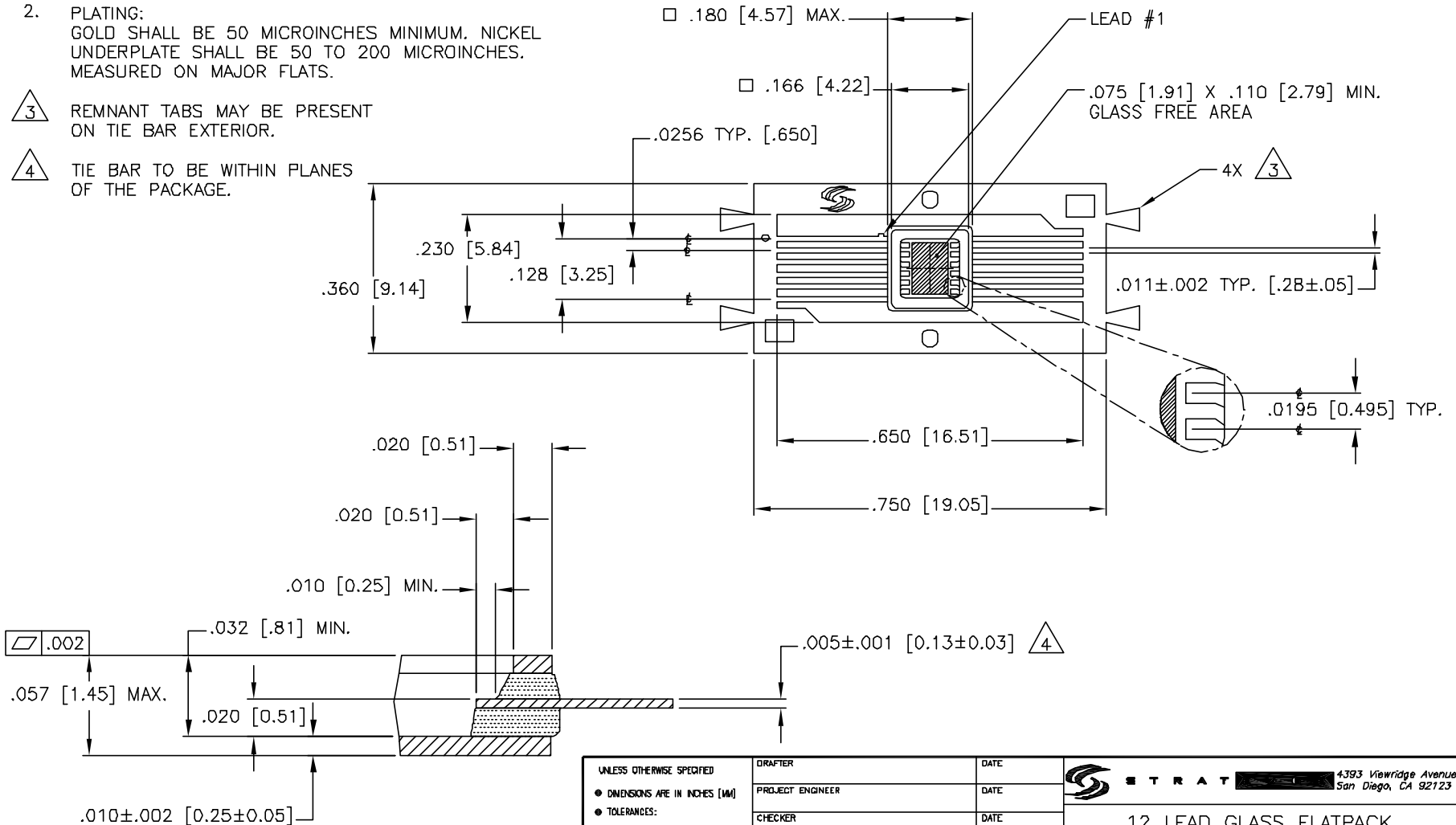
PROPRIETARY  
 THE INFORMATION CONTAINED IN OR DISCLOSED BY THIS DOCUMENT IS CONSIDERED PROPRIETARY BY STRATEGGE CORPORATION. THE ITEMS AND INFORMATION CONTAINED OR DISCLOSED HEREIN SHALL NOT BE USED, COPIED OR REPRODUCED IN WHOLE OR IN PART, NOR SHALL THE CONTENTS BE REVEALED IN ANY MANNER TO ANY PERSON UNLESS WRITTEN PERMISSION IS FIRST OBTAINED FROM STRATEGGE CORPORATION.

NOTES, UNLESS OTHERWISE SPECIFIED:

1. MATERIAL:  
 SEAL RING: F-15 ALLOY  
 BASE: F-15 ALLOY  
 LEADS: F-15 ALLOY  
 GLASS: 7052 OR EQUIVALENT WITH AL/LOAD
2. PLATING:  
 GOLD SHALL BE 50 MICROINCHES MINIMUM. NICKEL UNDERPLATE SHALL BE 50 TO 200 MICROINCHES. MEASURED ON MAJOR FLATS.

3 REMNANT TABS MAY BE PRESENT ON TIE BAR EXTERIOR.

4 TIE BAR TO BE WITHIN PLANES OF THE PACKAGE.



UNLESS OTHERWISE SPECIFIED ● DIMENSIONS ARE IN INCHES [MM] ● TOLERANCES: ANGLES +/- 1 DEG 3 PL DECIMALS ±.005 [.13]	DRAFTER	DATE	4393 Viewridge Avenue San Diego, CA 92123		
	PROJECT ENGINEER	DATE			
	CHECKER	DATE	12 LEAD GLASS FLATPACK .180 [4.57] SQ.		
	MARKETING	DATE			
QA	DATE	SIZE	CAGE CODE	DRAWING NO	REV
		A	OHZT6	G1616M-7	-
		SCALE NONE	G1616M-7 rev-	SHEET 1 OF 1	