



S T R A T E D G E

High Performance Packaging Solutions

9424 Abraham Way
Santee, CA 92071

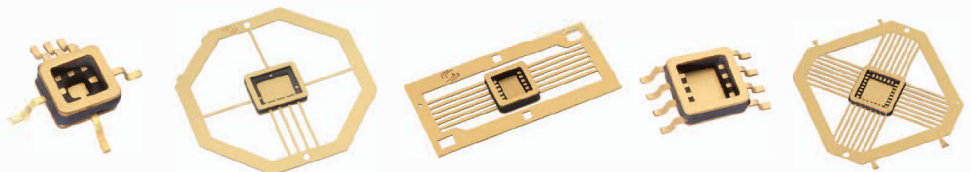
ph
858.569.5000

em
info@stratedge.com
www.stratedge.com

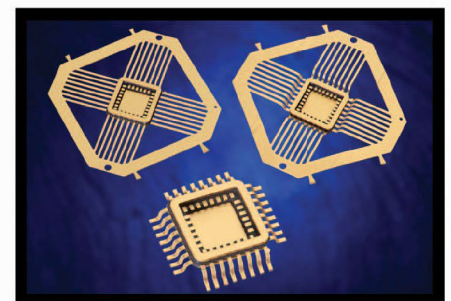
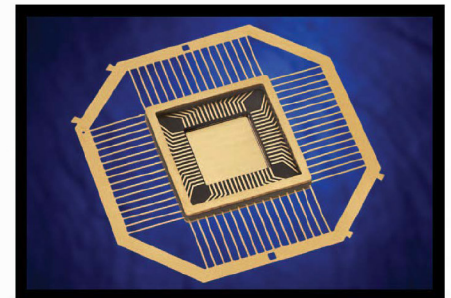
StratEdge designs and manufactures electronic packages as well as provides assembly and test services. StratEdge has several families of post-fired and molded ceramic semiconductor packages, four of which are shown in this document. Our patented electrical transition designs give the packages exceptionally low electrical losses, even at 50 GHz. Markets served mixed signal, VSAT, broadband wireless, satellite, point-to-point/multipoint, test and measurement, defense, automotive, and down-hole. All packages are lead-free and most meet RoHS and WEEE standards. StratEdge is ITAR registered and all manufacturing is performed in its ISO 9000:2015 facility near San Diego, California, USA.

MC Series

- Fully Hermetic
- High thermal conductivity bases available
- Supplied with metal lid with AuSn preform
- Custom designs available for low NRE
- Designs available for DC to 18 GHz
- Surface mount optional



PN	Seal Ring Outside Dimensions (mm)	Cavity Dimensions (mm)	Lid PN	Lead Count	Max Lead Count
G1010M-9	2.50 x 2.50	0.76 x 0.76	CL1010	3	4
G1111M-1	3.00 x 3.00	0.90 x 0.90	CL1111	6	8
G1212M-2	3.18 x 3.18	1.78 x 1.02	CL1212	6	10
G1616CT-2 ⁴	4.22 x 4.22	2.29 x 1.78	CL1616	8	12
G1616M-1	4.22 x 4.22	2.29 x 1.78	CL1616	8	12
G1616M-7 ³	4.22 x 4.22	2.79 x 1.90	CL1616	12	12
G2121M-1	5.46 x 5.46	3.05 x 3.05	CL2121	16	28
G2121M-7 ³	5.46 x 5.46	3.05 x 3.05	CL2121	32 ¹	28
G2121M-7F ³	5.46 x 5.46	3.05 x 3.05	CL2121	32 ^{1,2}	28
G2420M-1	6.21 x 5.21	3.68 x 2.67	CL2420	7	14
G2525CT-4 ⁴	6.35 x 6.35	3.81 x 3.81	CL2525	24	32
G2525M-1	6.35 x 6.35	4.57 x 3.81	CL2525	10	32
G2525M-6	6.35 x 6.35	3.81 x 3.81	CL2525	32	32
G2616M-1	6.73 x 4.19	4.19 x 1.65	CL2616	14	14
G2626M-1	6.73 x 6.73	3.81 x 3.81	CL2626	24	32
G3030M-1	7.75 x 7.75	4.83 x 4.83	CL3030	14	36
G3333M-1	8.38 x 8.38	4.83 x 4.83	CL3333	32	40
G3725M-1	9.52 x 6.35	7.37 x 3.43	CL3725	14	16
G3838M-1	9.52 x 9.52	7.62 x 6.45	CL3838	14	44
G3838M-4	9.52 x 9.52	6.73 x 6.73	CL3838	36	44
G4040M-5 ³	10.16 x 10.16	6.60 x 6.60	CL4040	52	52
G5050M-1	12.70 x 12.70	9.91 x 9.91	CL5050	12	64
G6262CT-6 ⁴	15.88 x 15.88	7.87 x 7.87	CL6262	64	64

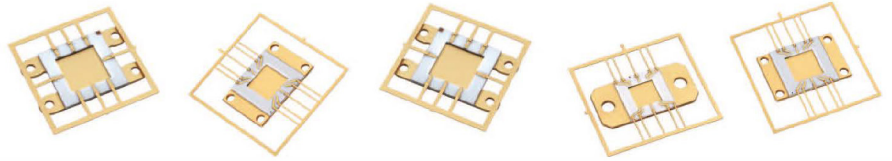


1 Four non-functional corner leads
2 Formed leads, cavity down
3 Performance optimized up to 18GHz
4 High thermal conductivity base



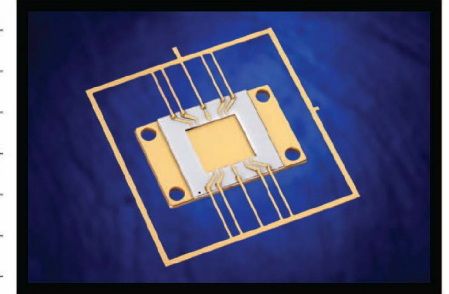
LPA

- High thermal conductivity bases; many with bolt holes
- Low loss from DC to 23 GHz
- Supplied with cup-shaped lid with epoxy preform
- Perfect for C, X, Ku, and K band amplifiers
- Leaded for easy assembly

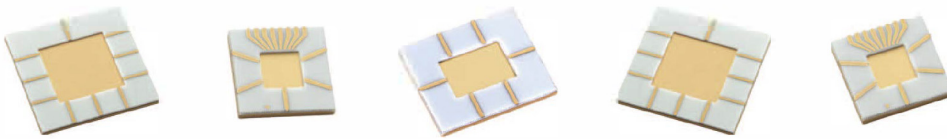


PN	Outside Ceramic (mm)	Cavity Dimensions (mm)	Lid PN	I/O's	Cu-Composite Base
580274	8.38 x 8.38	4.52 x 4.52	200045	2RF, 8DC	2 Bolt holes
580286	11.43 x 11.43	6.35 x 6.35	200046	2RF, 8DC	4 Bolt holes
580293	8.38 x 8.38	4.52 x 4.52	200045	2RF, 2DC	2 Bolt holes
580341	10.16 x 8.64	6.38 x 4.78	200063	2RF, 8DC	2 Bolt holes
580348	13.21 x 13.21	8.13 x 8.13	200064	8RF	4 Bolt holes
580349	11.43 x 11.43	6.35 x 6.35	200046	2RF, 8DC	Earless
580350	12.01 x 11.43	7.62 x 7.37	200065	2RF, 8DC	Earless
580403 ¹	11.43 x 11.43	6.35 x 6.35	200046	2RF, 8DC	4 Bolt holes

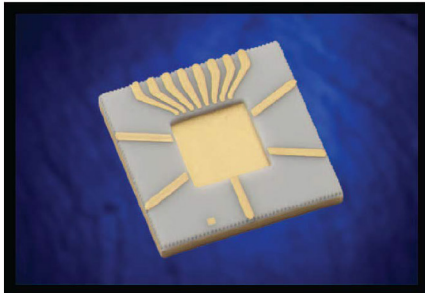
1 Tuned for Ka band



SE50



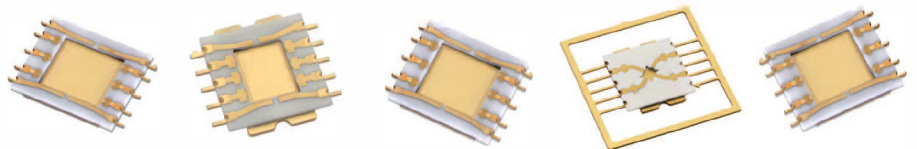
- Ultra low loss from DC to 60 GHz
- High thermal conductivity Cu-composite bases
- Supplied with cup-shaped lid with epoxy preform
- VSAT, PTP radios, PTMP radios
- Wire or ribbon bonded directly to board



PN	Length (mm)	Width (mm)	Cavity Length (mm)	Cavity Width (mm)	Lid PN	I/O's
580383	9.91	8.38	5.08	3.56	200121	6RF
580384	7.62	7.62	2.54	2.54	200110	2RF, 8DC
580455	6.05	5.89	2.49	2.51	200117	5RF, 8DC
580458	11.43	11.43	6.35	6.35	200118	10RF
580459	7.98	9.40	4.11	5.54	200119	2RF, 2DC

SMX/SMK

- Low cost surface mount microwave packages
- High thermal conductivity Cu-composite bases
- Excellent electrical properties through Ku band
- Supplied with cup-shaped lid with epoxy preform
- Perfect for C, X, Ku, and K band amplifiers



PN	Outside Overall Dimensions (mm)	Outside Ceramic (mm)	Cavity Dimensions (mm)	Lid PN	I/O's	Bolt Hole
580447	7.87 x 8.51	6.86 x 6.86	3.13 x 3.98	200045	6RF, 4DC	Yes
580448	8.00 x 11.13	8.00 x 9.47	5.59 x 5.21	200102	6RF, 4DC	No
580472	7.87 x 8.51	6.86 x 6.86	1.35 x 1.09	200076	4RF	Yes

