



STRATEDGE

High Performance Packaging Solutions

9424 Abraham Way
Santee, CA 92071

ph
858.569.5000

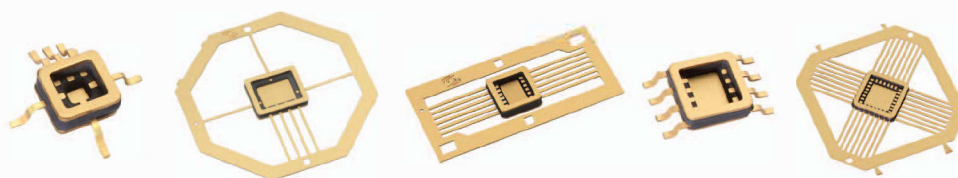
em
info@stratedge.com

www.stratedge.com

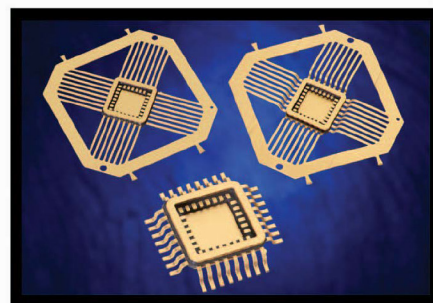
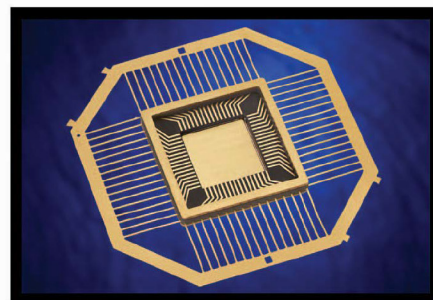
StratEdge designs and manufactures electronic packages as well as provides assembly and test services. StratEdge has several families of post-fired and molded ceramic semiconductor packages, four of which are shown in this document. Our patented electrical transition designs give the packages exceptionally low electrical losses, even at 50 GHz. Markets served mixed signal, VSAT, broadband wireless, satellite, point-to-point/multipoint, test and measurement, defense, automotive, and down-hole. All packages are lead-free and most meet RoHS and WEEE standards. StratEdge is ITAR registered and all manufacturing is performed in its ISO 9000:2015 facility near San Diego, California, USA.

MC Series

- Fully Hermetic
- High thermal conductivity bases available
- Supplied with metal lid with AuSn preform
- Custom designs available for low NRE
- Designs available for DC to 18 GHz
- Surface mount optional



| PN | Seal Ring Outside Dimensions | Cavity Dimensions | Lid PN | Lead Count | Max Lead Count |
|------------------------|------------------------------|-------------------|--------|-------------------|----------------|
| G1010M-9 | .098" x .098" | .030" x .030" | CL1010 | 3 | 4 |
| G1111M-1 | .118" x .118" | .035" x .035" | CL1111 | 6 | 8 |
| G1212M-2 | .125" x .125" | .070" x .040" | CL1212 | 6 | 10 |
| G1616CT-2 ⁴ | .166" x .166" | .090" x .070" | CL1616 | 8 | 12 |
| G1616M-1 | .166" x .166" | .090" x .070" | CL1616 | 8 | 12 |
| G1616M-7 ³ | .166" x .166" | .110" x .075" | CL1616 | 12 | 12 |
| G2121M-1 | .215" x .215" | .120" x .120" | CL2121 | 16 | 28 |
| G2121M-7 ³ | .215" x .215" | .120" x .120" | CL2121 | 32 ¹ | 28 |
| G2121M-7F ³ | .215" x .215" | .120" x .120" | CL2121 | 32 ^{1,2} | 28 |
| G2420M-1 | .245" x .205" | .145" x .105" | CL2420 | 7 | 14 |
| G2525CT-4 ⁴ | .250" x .250" | .150" x .150" | CL2525 | 24 | 32 |
| G2525M-1 | .250" x .250" | .180" x .150" | CL2525 | 10 | 32 |
| G2525M-6 | .250" x .250" | .150" x .150" | CL2525 | 32 | 32 |
| G2616M-1 | .265" x .165" | .165" x .065" | CL2616 | 14 | 14 |
| G2626M-1 | .265" x .265" | .150" x .150" | CL2626 | 24 | 32 |
| G3030M-1 | .305" x .305" | .190" x .190" | CL3030 | 14 | 36 |
| G3333M-1 | .330" x .330" | .190" x .190" | CL3333 | 32 | 40 |
| G3725M-1 | .375" x .250" | .290" x .135" | CL3725 | 14 | 16 |
| G3838M-1 | .375" x .375" | .300" x .254" | CL3838 | 14 | 44 |
| G3838M-4 | .375" x .375" | .265" x .265" | CL3838 | 36 | 44 |
| G4040M-5 ³ | .400" x .400" | .260" x .260" | CL4040 | 52 | 52 |
| G5050M-1 | .500" x .500" | .390" x .390" | CL5050 | 12 | 64 |
| G6262CT-6 ⁴ | .625" x .625" | .310" x .310" | CL6262 | 64 | 64 |

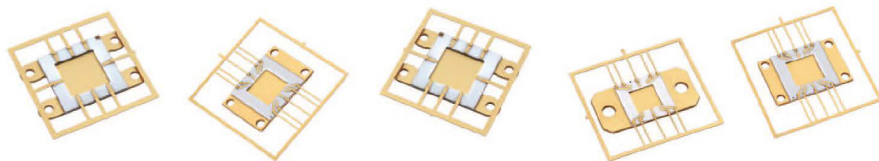


1 Four non-functional corner leads
2 Formed leads, cavity down
3 Performance optimized up to 18GHz
4 High thermal conductivity base



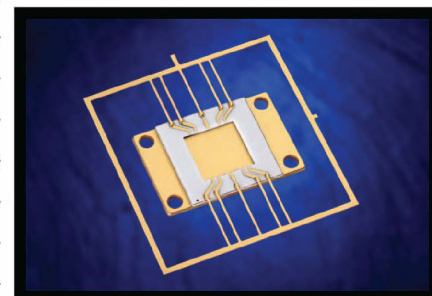
LPA

- High thermal conductivity bases; many with bolt holes
- Low loss from DC to 23 GHz
- Supplied with cup-shaped lid with epoxy preform
- Perfect for C, X, Ku, and K band amplifiers
- Leaded for easy assembly



| PN | Outside Ceramic | Cavity Dimensions | Lid PN | I/O's | Cu-Composite Base |
|---------------------|-----------------|-------------------|--------|----------|-------------------|
| 580274 | .330" x .330" | .178" x .178" | 200045 | 2RF, 8DC | 2 Bolt holes |
| 580286 | .450" x .450" | .250" x .250" | 200046 | 2RF, 8DC | 4 Bolt holes |
| 580293 | .330" x .330" | .178" x .178" | 200045 | 2RF, 2DC | 2 Bolt holes |
| 580341 | .400" x .340" | .251" x .188" | 200063 | 2RF, 8DC | 2 Bolt holes |
| 580348 | .520" x .520" | .320" x .320" | 200064 | 8RF | 4 Bolt holes |
| 580349 | .450" x .450" | .250" x .250" | 200046 | 2RF, 8DC | Earless |
| 580350 | .473" x .450" | .300" x .290" | 200065 | 2RF, 8DC | Earless |
| 580403 ¹ | .450" x .450" | .250" x .250" | 200046 | 2RF, 8DC | 4 Bolt holes |

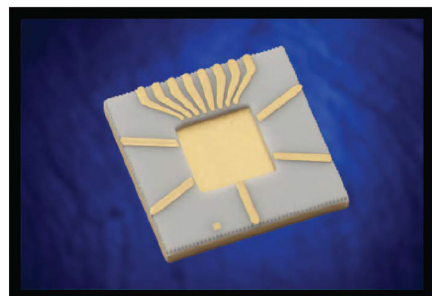
1. Tuned for Ka band



SE50



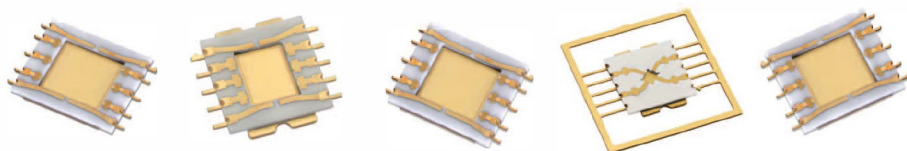
- Ultra low loss from DC to 60 GHz
- High thermal conductivity Cu-composite bases
- Supplied with cup-shaped lid with epoxy preform
- VSAT, PTP radios, PTMP radios
- Wire or ribbon bonded directly to board



| PN | Length | Width | Cavity Length | Cavity Width | Lid PN | I/O's |
|--------|--------|-------|---------------|--------------|--------|----------|
| 580383 | .390" | .330" | .200" | .140" | 200121 | 6RF |
| 580384 | .300" | .300" | .100" | .100" | 200110 | 2RF, 8DC |
| 580455 | .238" | .232" | .098" | .099" | 200117 | 5RF, 8DC |
| 580458 | .450" | .450" | .250" | .250" | 200118 | 10RF |
| 580459 | .371" | .314" | .214" | .162" | 200119 | 2RF, 2DC |

SMX/SMK

- Low cost surface mount microwave packages
- High thermal conductivity Cu-composite bases
- Excellent electrical properties through Ku band
- Supplied with cup-shaped lid with epoxy preform
- Perfect for C, X, Ku, and K band amplifiers



| PN | Outside Overall Dimensions | Outside Ceramic | Cavity Dimensions | Lid PN | I/O's | Bolt Hole |
|--------|----------------------------|-----------------|-------------------|--------|----------|-----------|
| 580447 | .310" x .335" | .270" x .270" | .125" x .155" | 200045 | 6RF, 4DC | Yes |
| 580448 | .315" x .438" | .315" x .373" | .220" x .205" | 200102 | 6RF, 4DC | No |
| 580472 | .355" x .310" | .270" x .270" | .053" x .043" | 200076 | 4RF | Yes |

