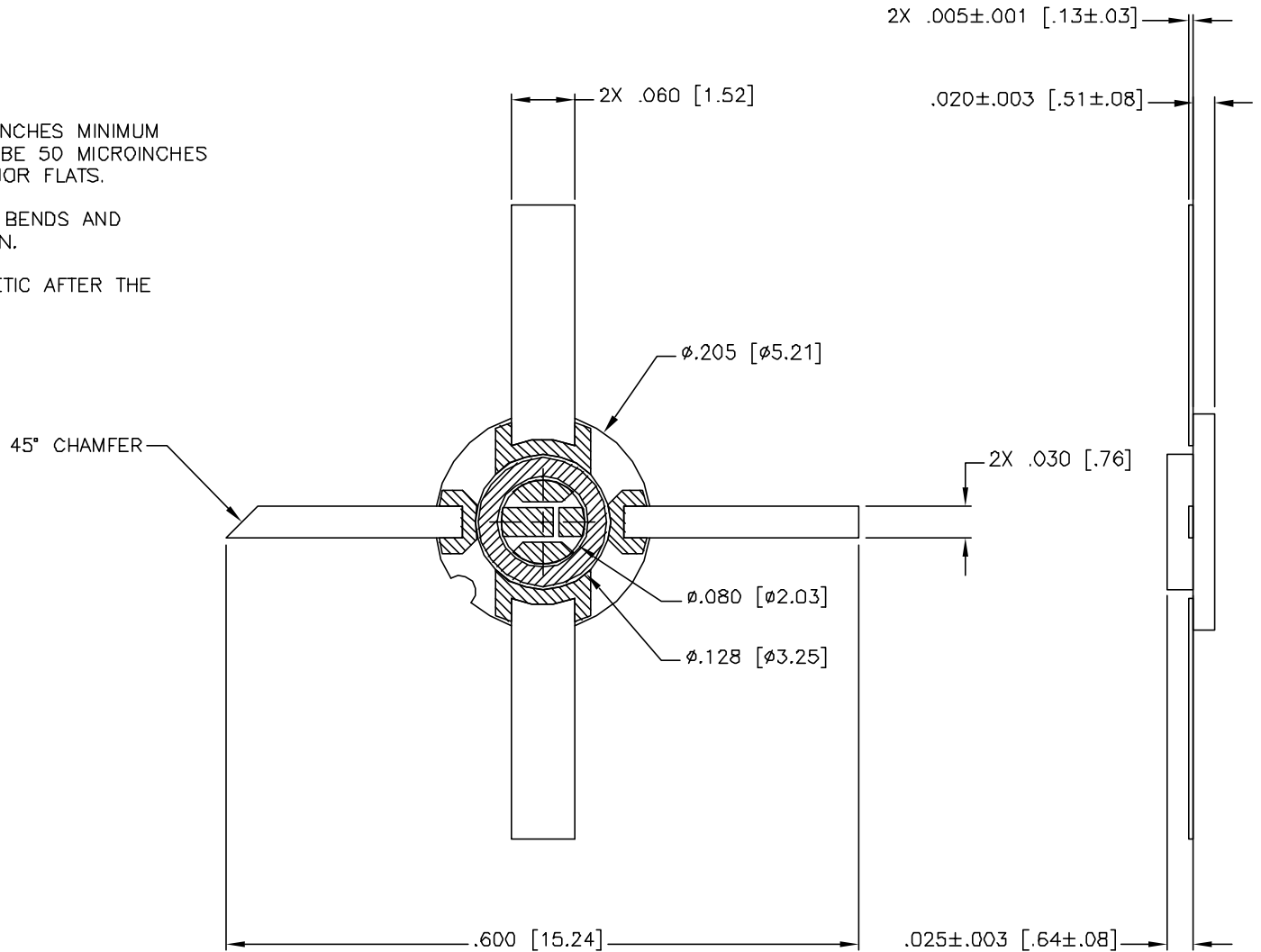


PROPRIETARY
 THE INFORMATION CONTAINED IN OR DISCLOSED BY THIS DOCUMENT IS CONSIDERED PROPRIETARY BY STRATEGED CORPORATION. THE ITEMS AND INFORMATION CONTAINED OR DISCLOSED HEREIN SHALL NOT BE USED, COPIED OR REPRODUCED IN WHOLE OR IN PART, NOR SHALL THE CONTENTS BE REVEALED IN ANY MANNER TO ANY PERSON UNLESS WRITTEN PERMISSION IS FIRST OBTAINED FROM STRATEGED CORPORATION.

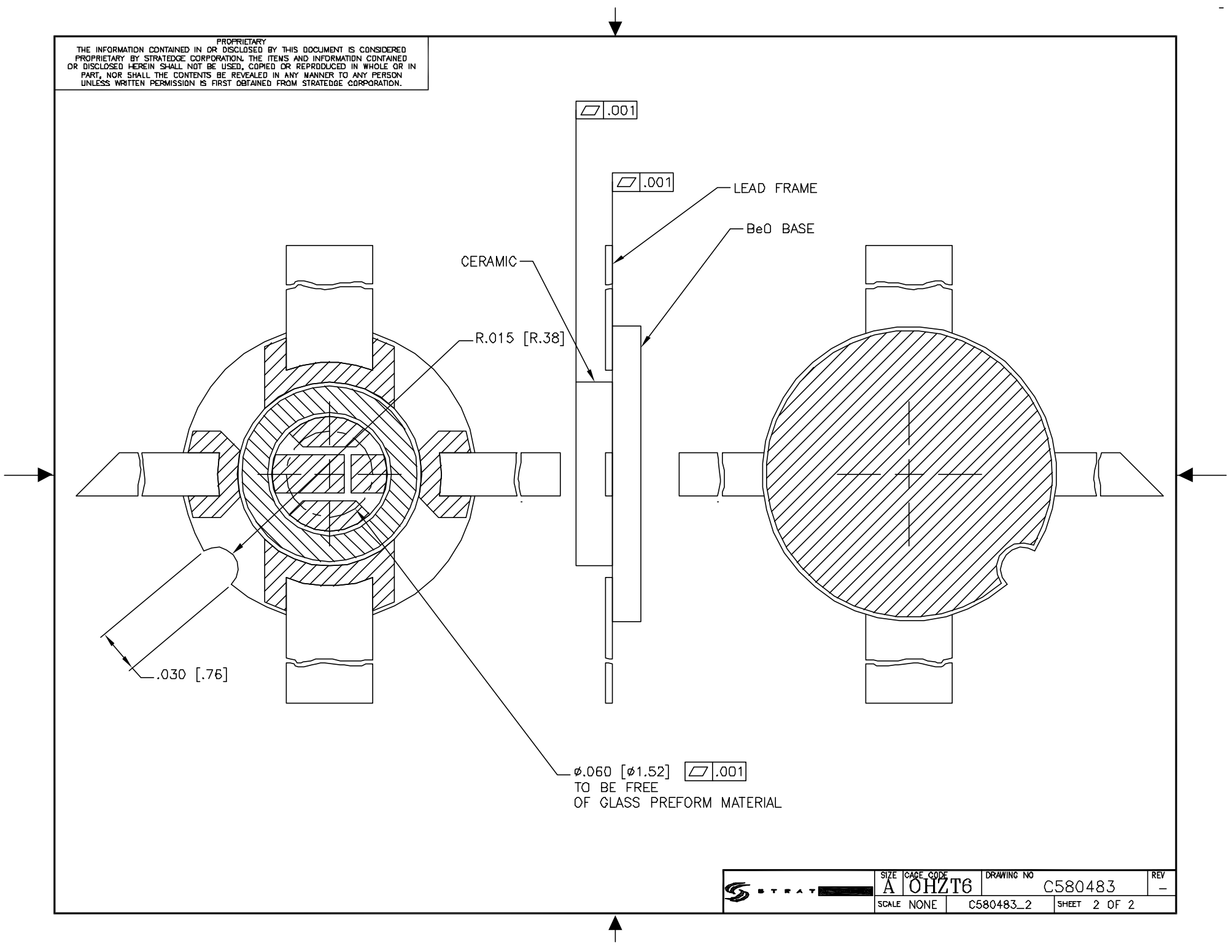
NOTES, UNLESS OTHERWISE SPECIFIED:

1. MATERIAL:
 BASE: 99% BeO MIN.
 CERAMIC: 96% Al₂O₃.
 LEADS: KOVAR
2. PLATING:
 GOLD SHALL BE 100 MICROINCHES MINIMUM
 NICKEL UNDERPLATE SHALL BE 50 MICROINCHES
 MINIMUM. MEASURED ON MAJOR FLATS.
3. LEADS TO WITHSTAND 3 90° BENDS AND
 RETURN TO NORMAL POSITION.
4. PACKAGE SHOULD BE HERMETIC AFTER THE
 FOLLOWING HEAT CYCLES.
 2 MINUTES AT 400°C
 2 MINUTES AT 320°C
 2 MINUTES AT 290°C



UNLESS OTHERWISE SPECIFIED ● DIMENSIONS ARE IN INCHES [MM] ● TOLERANCES: ANGLES +/- 1 DEG 4 PL DECIMALS ±.0005 [.013] 3 PL DECIMALS ±.005 [.13] 2 PL DECIMALS ±.01 [.25]	DRAFTER	DATE	6335 Ferris Square, Suite C San Diego, CA 92121		
	PROJECT ENGINEER	DATE			
	CHECKER	DATE	Ø.205 [5.21] BeO ASSEMBLY OUTLINE/CATALOG DRAWING		
	MARKETING	DATE			
QA	DATE	SIZE	CAGE CODE	DRAWING NO	REV
		A	OHZT6	C580483	—
		SCALE	NONE	C580483_1	SHEET 1 OF 2

PROPRIETARY
 THE INFORMATION CONTAINED IN OR DISCLOSED BY THIS DOCUMENT IS CONSIDERED
 PROPRIETARY BY STRATEGGE CORPORATION. THE ITEMS AND INFORMATION CONTAINED
 OR DISCLOSED HEREIN SHALL NOT BE USED, COPIED OR REPRODUCED IN WHOLE OR IN
 PART, NOR SHALL THE CONTENTS BE REVEALED IN ANY MANNER TO ANY PERSON
 UNLESS WRITTEN PERMISSION IS FIRST OBTAINED FROM STRATEGGE CORPORATION.



CERAMIC

R.015 [R.38]

.030 [.76]

.001

.001

LEAD FRAME

BeO BASE

ϕ .060 [ϕ 1.52] .001

TO BE FREE
 OF GLASS PREFORM MATERIAL

	SIZE	CAGE CODE	DRAWING NO	REV
	A	OHZT6	C580483	-
SCALE	NONE	C580483_2	SHEET 2 OF 2	